



St Saviour's

Church of England Primary School

SPRING 1 WEEK 4

Let God transform you into a new person by changing the way that you think - Romans 12:2 NLT

Dear Parents and Carers,

This half term is flying by and it has been a busy week for the Learning Council. They have been collecting pupil voice about the science curriculum and lessons and led Collective Worship on Thursday to the whole school.

PETS CORNER

The children in Pets Corner Club have been having lots of fun hanging out with Captain, Marvin and Marshall. They have been helping Mr Parker with their exercise by taking them out walking and ensuring that they are happy in their paddock.

LEARNING COUNCIL LEADERS

The Learning Council spoke to the school about how learning is important using the proverb: 15 The heart of the discerning acquires knowledge, for the ears of the wise seek it out.

The councillors spoke about the importance of reading for developing language, as well as talking about all the different ways the learning council helps the school in improving learning - such as Word of the Week and BSL Sign of the Week (this week being 'alpaca').



OUR VISION IN ACTION - RUNNING TO RAISE MONEY

Our very own Miss Kreft is taking on a big challenge this year all to support people in Khandel. She is very excited to be running her first marathon - The London Marathon - this year and she will be running to raise money for a wonderful charity called Khandel Light.

Khandel Light is a charity that works to improve the lives of vulnerable and disadvantaged families in Khandel through working with local communities who are facing challenging issues such as lack of water, jobs, education and opportunity. They aim to empower people through gaining independence and the capability to make choices about their own futures. They work on a range of amazing projects to support people in a variety of areas including supporting young children having access to education and in empowering women.

If anyone would like to donate a contribution towards the charity please see the link below to Miss Kreft's fundraising page.

<https://fundraising.khandel-light.co.uk/fundraising/stephkreftsfundraisingpageforkhandellight>



I would like to end with a popular Chinese New Year Greeting which encourages people to support and show love to others. “心想事成, 万事如意” (xīn xiǎng shì chéng, wàn shì rú yì) “May all your wishes come true and go well with you”!

Yours faithfully,
Miss Cherry



COLLECTIVE WORSHIP

This week in collective worship we looked at Chinese New Year.

This year Chinese New Year falls on Saturday 10th February 2024. We looked at how it is celebrated and learnt that people celebrate by giving red envelopes with money inside, spring cleaning the home, firecrackers, sharing food with family and friends and that dragon dances are performed to scare away bad spirits.

Dancers carry a long paper dragon held up on poles and raise the dragon up and down. These dances can be performed during the day or at night. However, at night, a blazing torch would be carried to light the way. People who are celebrating Chinese New Year will have been looking forward to it over the last few weeks and getting their houses ready for the celebrations

These preparations include putting up big red decorations (red is thought to be a lucky colour), hanging two-line messages with new year good wishes around the doors, cleaning the house and buying new clothes.

It's also a time when people visit their temples and they especially remember their ancestors, people who were part of the family but who have now died. For many people, respect for parents and for elderly people is very important.

This links to our Collective Worship themes from the last two weeks, respect and dignity.



Here is a Chinese wish of hope for the future:

'May your happiness be as wide as the East Sea.' HAPPY NEW YEAR!

VALUES CARDS COLLECTORS

Well done

to

Jannat & Sadie A

in Y2

who have been excellent role models and have collected values cards for consistently showing the school values.



STARS OF THE WEEK



Reception: Clementine & Rithwin



Year 1: Rares & Osasu



Year 2: Marios & Jasmine



Year 3: Bing & Stanley



Year 4: Logan & Rodi



Year 5: Daniel & Zaraa



Year 6: Chrischelle & Carnes



@StSavioursSchool



@StSaviours_E17



@StSavioursCofE

PROGRESS CUP WINNERS

A huge well done to **Ezra, Julian & Jovantay** who are this week's Progress Cup winners!



EYFS Progress Cup
Ezra Reception



KS1 Progress Cup
Julian Year 3



KS2 Progress Cup
Jovantay Year 6

ATTENDANCE AWARDS



Well done to

Y1 Amelia Earheart - 100.0%

&

Y3 Albert Einstein - 98.91%



who have won the attendance mascots this week.



@StSavioursSchool



@StSaviours_E17



@StSavioursCofE

ATTENDANCE AND PUNCTUALITY

School attendance is central to raising standards in education and ensuring all pupils can fulfil their potential. The expected attendance level at St Saviour's is 97%.

Parents and carers are expected to:

- ensure their child attends every day the school is open except when a statutory reason applies
- immediately notify the school when their child has to be unexpectedly absent (e.g. sickness)
- ensure that, where possible, appointments for their child are made outside of the school day
- report to the main office when returning to school during the school day
- only request leave of absence in exceptional circumstances and do so in advance
- not arrange family holidays during term time

All appointments, other than emergency ones, need to be booked outside of school hours. Other than in an emergency, a letter or appointment card must be presented at the Main Office ahead of the appointment for the school to be able to authorise the absence.

Holidays during term time will not be authorised.

The school or local authority can fine parents for the unauthorised absence of their child from school, where the child is of compulsory school age.

SCHOOL DISMISSAL

To keep children safe when you collect your child at the end of the day or after clubs, can I please ask they you keep them close and not let them run ahead or walk far behind you.

If you have arranged for your child to be collected by another parent, friend or relative, please ensure that you have informed the school office so that the class teacher can be made aware and can safely dismiss your child. Please be patient if the teacher needs to check arrangements - the safety of your children is of the most importance.



@StSavioursSchool



@StSaviours_E17

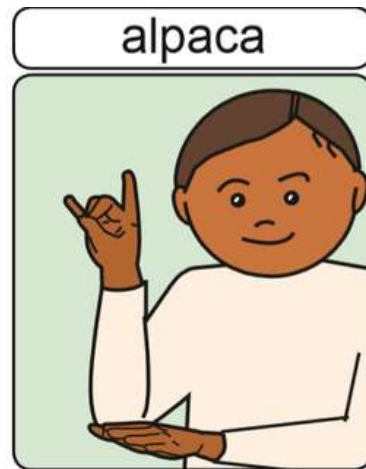


@StSavioursCofE



COUNCILLORS' CORNER

LEARNING COUNCIL



Learning Council members are continuing to learn teach and share British Sign Language signs with the school community each week.

This week's sign is
'alpaca'.

Can you remember the signs we have already learned?

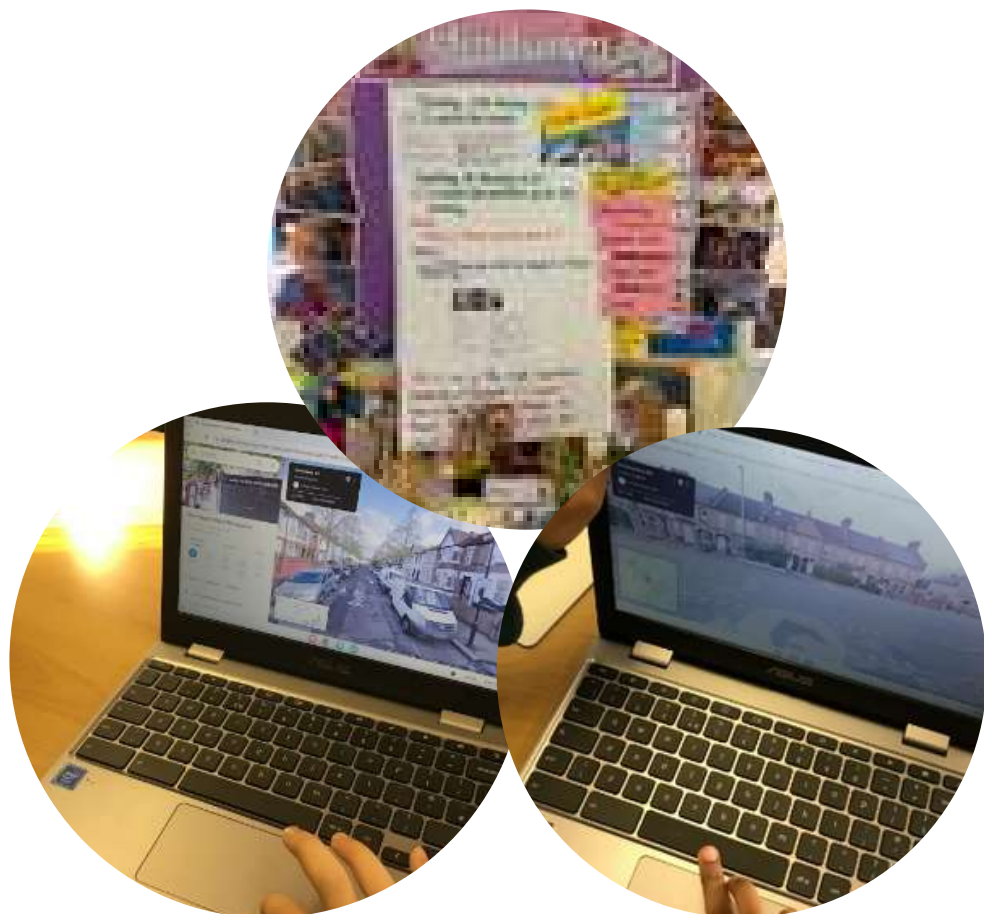
YEAR 3 CLASS CORNER

In Year 3 this week, we studied the transportation of water in plants and investigated the affect of sunlight on the amount of water transported. We used celery sticks, food dye and water. The celery stick that was placed in direct sunlight, was the most effective but the one left in a darkened space as the least effective.

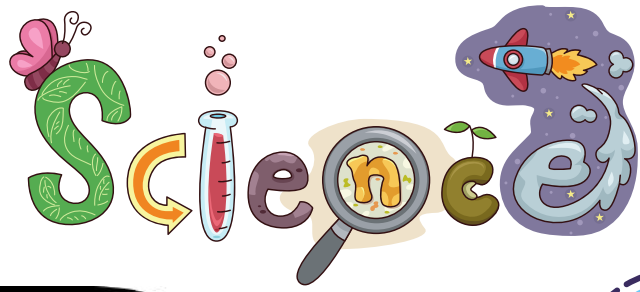
In RE, we have been learning about Hinduism and are fascinated with the many stories of Hindu deities and have learned about their place of worship, Mandir.

In topic, we have explored our local area using google maps and have learned the meaning of different map symbols.

We are now using nature around us to produce sketches of animals found in our local area, inspired by the watercolours created by the artist, Jennie Webber.



Forensic



Did you know that everyone has a unique fingerprint?

Scientists, who work in law enforcement, can use this knowledge to catch the crooks.



Materials

- 2 Sheets of Paper
- Standard HB Pencil
- Clear Tape
- Magnifying Glass (Optional)

Method/Procedure:

1. Place one of the sheets of paper in front of you on the table
2. Using the pencil heavily shade in a box about the size of a quarter
3. Take your index finger and heavily rub the top of your finger into the box that you have just shaded (ensure that the top of your finger is coated in the black shade)
4. Take a piece of tape and place it on the black shaded part of your finger
5. Remove the tape and stick it on the other piece of paper
6. Write the name of the person whose fingerprint it is
7. Repeat the process on multiple people
8. Compare fingerprints

What patterns do you notice? Are there similarities?
Take it further: do all your fingers have the same pattern or is every finger's print unique as well?

Remember to share your experiences by emailing the school!

PARENT CALENDAR

FEBRUARY 2024

MON	TUE	WED	THU	FRI	SAT	SUN
			1	2	3	4
5	6	7	8	9 Y4 MA Forest School <i>Last day of Spring Term Finish at 3:30pm</i>	10	11
February Half Term - 12th Feb to 16th Feb						
19	20 Story Explorer Drama Workshop - Rec & Y1	21 School Nurse Drop - 9:30am - 10:30am	22	23 Y5 MC Forest School	24	25
26 Safari Pets - Y2 to Y4	27	28 Street Dance Workshop	29			

MARCH 2024

MON	TUE	WED	THU	FRI	SAT	SUN
				1 Y5 SH Forest School	2	3
4	5	6	7 World Book Day Dress up as your favourite character	8 Y2 EP Forest School	9	10
11	12	13	14	15 Y2 DA Forest School Y2 Book Day Wear something red	16	17
18	19	20 School Nurse Drop - 9:30am - 10:30am	21	22 Y3 RP Forest School	23	24
25	26	27	28	29	30	31
Easter Half Term - 29th Mar to 12th Apr						

APRIL 2024

MON	TUE	WED	THU	FRI	SAT	SUN
1	2	3	4	5	6	7
Easter Half Term - 29th Mar to 12th Apr						
8	9	10	11	12	13	14
15	16	17	18	19 Y3 AE Forest School	20	21
22	23	24 School Nurse Drop - 9:30am - 10:30am	25	26 Y4 COP Forest School	27	28
29	30					



@StSavioursSchool



@StSaviours_E17



@StSavioursCofE

February Half Term Courses

The Scene of the Crime

Make a mystery themed detective movie this half term.

Fetch the forensic team, investigate and interrogate to catch the criminals!

Find available dates and locations online.



Book Now



Now Booking



Join in over half term and make a thrilling police/crime drama!

Call in the forensics team, investigate, interrogate and conquer the courtroom.



Learn more:
sparksarts.co.uk

STRATFORD FEBRUARY HALF TERM CAMP



AT: CHOBHAM ACADEMY

Temple Mill Lane, Stratford, Olympic Park E20 1BD

HELD ON MONDAY 12th TO FRIDAY 16th FEBRUARY 2024,
9AM – 3PM
FOR BOYS AND GIRLS AGED 4 – 13

WE HAVE BEEN RUNNING OUR FOOTBALL CAMPS AND COURSES IN YOUR COMMUNITY FOR OVER 24 YEARS!

Exciting news! We are running our annual February Half Term Camp on Monday 12th to Friday 16th February 2024.

- The Camp is for 5 days from 9am-3pm. Lunch is 12.15pm-1pm, children must bring their own packed lunch and plenty of drinks.
- The camp is held on Astroturf football pitches and Sports Hall (If bad weather) therefore children may wear trainers or moulded sole plastic studs if playing outside.
- On Friday at 2.15pm we hold a presentation, whereby **EACH CHILD WILL RECEIVE AN ENGRAVED TROPHY** as well as many opportunities to win extra trophies, including the FA Cup Tournament, penalty shoot out competition, skill point winners.
- The camp is run by FA qualified coaches, who are DBS checked and are currently working with children in schools daily, enabling them to learn essential football techniques, building **CONFIDENCE**, improving **FITNESS** and providing the most important ingredient of all 'FUN'!
- The cost of the 5 day camp is £100 per child (£60 for additional brothers and sisters). £25 daily rate.

There will be consent forms to complete on arrival and payment should be made on the first morning of the camp or in advance via payment link.

www.prosoccercoaching.org

**TO RESERVE FEBRUARY CAMP PLACES
PLEASE TEXT:
CHOBHAM CAMP+ CHILD'S FULL NAME + AGE
and receive confirmation by text to:-
07456 098547**



Term Dates 2023- 2024



Autumn Term 2023

First Half (35 Days)

INSET – Monday 4th, Tuesday 5th and Wednesday 6th September 2023

Start – Thursday 7th September 2023

End – Friday 20th October 2023

Half Term: Monday 23rd October 2023- Friday 27th October 2023

Second Half (38 Days)

Start – Monday 30th October 2023

End – Wednesday 20th December 2023

Holidays: Thursday 21st December 2023 to Friday 5th January 2024

Spring Term 2024

First Half (25 Days)

INSET – Monday 8th January 2024

Start – Tuesday 9th January 2024

End - Friday 9th February 2024

Half Term: Monday 12th February 2024 – Friday 16th February 2024

Second Half (29 Days)

Start - Monday 19th February 2024

End – Thursday 28th March 2024

Holidays: Friday 29th March to Friday 12th April 2024

Summer Term 2024

First Half (29 Days)

Start – Monday 15th April 2024

End - Friday 24th May 2024

Half Term: Monday 27th May 2024 - Friday 31st May 2024

Holidays May Day Bank Holiday: Monday 6th May 2024

Spring Bank Holiday: Monday 27th May 2024 (during Half Term)

Second Half (38 Days)

Start - Monday 3rd June 2024

End – Wednesday 24th July 2024

This calendar gives a total of 194 (190 pupil days plus 4 inset days – Staff to work twilight sessions to make up 1 inset day).