

Weekly Newsletter
Tuesday 4 June 2019



Dear Parent and Carer,

A warm welcome back for the final half term of this academic year and I hope you have all had a restful and peaceful holiday. I have been lucky enough to go on some lovely cycle trips through the Walthamstow Wetlands. I still find it incredible to believe that these marshes are the biggest urban wetlands in Europe and they are right on our doorstep. In June, a group of our pupils will be visiting the Woodberry Wetlands to link with our art projects for this half term.

As I have just mentioned Europe, we had a very exciting day here at St. Saviour's on 23rd May when all the children in our school were given a vote for the European elections. In the weeks leading up towards the election, teachers led assemblies about democracy and our British Values, we had political debates in class and we learnt about the main parties. When it came to voting time, there was real excitement in the air. Our results were as follows: The Conservatives 12 votes, The Green Party 112 votes, The Labour Party 88 votes, The Liberal Democrats 27 votes and the Brexit Party 17.

Following these results, our Year 6 pupils then used this data to calculate percentages, draw tables, plot graphs and create questions which some of our students will be challenged to answer. Not only that, on Monday they will be filming a political broadcast which will be shown to all the children in an assembly. Election fever is here to stay.

All these wonderful learning opportunities would not be taking place without the children being at school and we are continuing to aim for outstanding attendance. Each week, we celebrate the classes with the highest attendance and I am looking forward to hearing which classes have had 100% attendance this week. You can further support us to deliver fantastic learning at St. Saviour's by bringing your children to school on time.

Whole School Attendance

The whole school attendance target is 96.5%.

Last week the attendance was 95.25%

As we are heading towards the longest day of the year, I wish you a most wonderful and blessed week and as always, I am looking forward greeting you in the mornings at our school gate.

Amir Lemouchi

Headteacher

Amir Lemouchi
Headteacher

Julie Tolliday
Deputy Head

Attendance Award for 100%
Week ending Friday 24 May :
Year 2 Oak

Award for 100% being on time
Week ending Friday 24 May:
Year 5 Elm and Year 5 Willow

Stars of the Week

THIS WEEK'S SHINING STARS

A huge well done to:

Reception Birch: **Alexander**
Reception Oak: **Eleanor- Mae**
Year 1 Elm: **Thalia**
Year 1 Willow: **Elijah**
Year 2 Oak: **Zavier M**
Year 2 Birch: **Angela**
Year 3 Elm: **Inshal**
Year 3 Willow: **Amelia**
Year 4 Birch: **N/A**
Year 4 Oak: **N/A**
Year 5 Elm: **Narcis**
Year 5 Willow: **Mia -Louise**
Year 6 Birch: **N/A**
Year 6 Oak: **N/A**

PEDDLE MY WHEELS

This is a fantastic opportunity to purchase a used bicycle or sell your own. Bikes need to be pre-ordered.

For more information please go to:

www.peddlemywheels.com/market-orderform

The event takes place on Tuesday 18 June 2019 in the playground.



European Elections at St Saviour's

Year 2 children posting their vote.



Events

Tuesday, 11th June 2019 at 5pm:

Dr Steinbeis will be visiting our school to present on the science of brain development (see details below).

Monday 17 June 2019: Tate Y3 Project.

Tuesday 18 June 2019: Peddle My Wheels.

Monday 24 June – Wednesday 26 June 2019 – Y6 Gilwell Park

Thursday 18 July 2019: Year 6 Leavers Mass at St. Saviour's church.

Best Progress Trophies

We are proud to announce this week's two winners:

KS1 Ingrid, Reception Birch

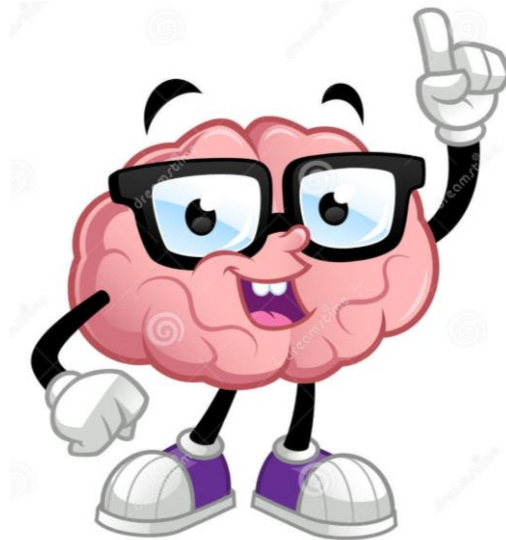
KS2 Devonte , Year 6 Birch

Well Done!



Vehicle idling action

There will be a anti-idling event at St Saviours School this Thursday at 3.15pm. Further details to follow.



Research Project on Brain Development in Children

Dear Parents and Carers

We have been approached by researchers of University College London (UCL) to collaborate on a project looking at whether executive functions can be trained in children. Executive functions include memory, flexibility, processing speed and inhibition and are a very important predictor for present and future well-being. We think this could be of some interest to you. The researchers have designed a training programme that can be delivered via a computer. The training is delivered both at home and at school for duration of 8 weeks. Before and after, children and their parents are invited to visit UCL in central London to participate in a series of games and tests as well as a brain scan so that the effects of the training can be assessed. The team from UCL is a young, dynamic and engaging group of researchers headed by Dr Nik Steinbeis (<http://www.dcp-lab.org/>). We are very excited by this opportunity and hope that you share our enthusiasm. Dr Steinbeis will be visiting our school to present on the science of brain development and this particular project on **Tuesday 11th June at 5pm.**

We warmly encourage you to attend. If you have any questions before hand please contact Helene Earnshaw SENCO.

TERM DATES FOR 2019-2020

Autumn Term 2019

First half (32 days)

INSET – Monday 2nd, Tuesday 3rd September, and Wednesday 4th

Start –Thursday 5th September

End - Friday 18th October

Half Term: Monday 21 October to Friday 25 October 2019

Second half (40 days)

Start - Monday 28th October

End – Friday 20th December

Christmas holiday: Monday 23rd December 2019 to Friday 3rd January 2020

Spring Term 2020

First half (29 days)

INSET - Monday 6th January 2020

Start – Tuesday 7th January 2020

End – Friday 14th February 2020

Half Term: Monday 17 February to Friday 21 February 2020

Second Half (30 days)

Start – Monday 24th February 2020

End – Friday 3rd April 2020

Easter Holiday Monday 6th April 2020 to Friday 17th April 2020

Summer Term 2020

First Half (24 days)

Start - Monday 20 April 2020

End Friday 22nd May

Bank Holidays Monday 4th May and Monday 25th May (during half term)

Half Term: Tuesday 26 May 2020 to Friday 29 May 2020

Second Half (35days)

Start – Monday 1st June

Finish Friday 17th July

This calendar gives a total of 195 days. Four Inset Days and one further day made up from Twilight sessions gives 190 school days