



St Saviour's C of E Primary School
33 Verulam Avenue, Walthamstow E17 8ER
Tel: 020 8520 0612
Email: school@st-saviours.waltham.sch.uk
Website: stsaviourscofe.org

Monday 20th
February 2017

Weekly Newsletter

Welcome back! We're halfway through the year and there are two days until Lent. We're launching a fantastic character-developing challenge on Wednesday. Please see the end of my message for details.

From now until assessment time in May (for Year 2 and Year 6) and June for everyone else is a vital time when children make lots of progress. Due to a 'spiral curriculum', we'll be revisiting elements learned earlier in the year (particularly in maths) – with the challenge increased. It's a really important time for children to be in school.

Please ensure your child has a high level of attendance: 95% or more. We really want to work with parents/carers to help overcome attendance and lateness issues. Remember that 90% attendance is still equivalent to missing half a day every week and the DfE sets a threshold for persistent absence as a pupil not attending for 10% or more of his or her possible sessions. I and other members of the Senior Leadership Team will continue to meet parents/carers whose children have attendance levels below 90%. These meetings are to discuss any difficulties parents may have getting children to school, what help/support the school can offer... and ultimately to remind parents/carers that it is their statutory duty to ensure regular attendance.

On a brighter note, thank you to the now five parents who have now completed an Ofsted Parent View survey. Ofsted requires a minimum of 10 responses before a report is generated, so please take a look at page 4 and consider spending a few minutes giving your feedback.

On the last week of half term, we held a special assembly to show enable our school orchestra to show off their skills. This included children playing the violin, guitar, keyboards and cello. Miss Baron, who leads our orchestra (along with all our singing and other musical activities) showed that she is a very accomplished violinist herself (she has completed *all* the grades, don't you know!) and impressed the children with her wonderful playing. One of the children asked her if you needed confidence to play an instrument; Miss Baron told them that it was tenacity and hard work that made somebody a good musician. Tenacity, which is one of our school values, is the one we seem to mention quite a lot as it fits in with our 'growth mindset' approach to learning. We are really focusing on helping our children to be resilient when learning and show tenacity when things get difficult. As James Joyce said, 'Mistakes are portals of discovery.'

And finally... Lent starts on Wednesday. As part of this, tomorrow Mrs Woodley – our Worship leader – will be launching the 40acts, the generosity challenge for Lent, created by UK Christian charity, Stewardship. For seven years, 40acts has asked a question: what if Lent could be a time of radical generosity as well as spiritual discipline? The challenge encourages churches, Christian groups, schools etc to give generously during Lent, not money but through time and through actions. Some of the challenges we'll be asking pupils – and staff - to take on are: give somebody a nice compliment today, be the first to say sorry to somebody, chat with someone outside your normal group of friends, pick up litter and put them in the bin. We'd love parents/carers to support their children – and join in – this challenge. For more details, ask your child tomorrow or visit 40acts.org.uk.

Have a great week!

David Ogle,
Head of School

Parent Workshops:

4-4:30pm in 'The Cube' on Tuesdays

Grammar

21st February
Ms Tolliday

School Vision

28th February
Mr Ogle

Science Workshop

7th March

History Projects

14th March

Rec-Y6 Calculation

Wed 15th March

Rec-Y6 Grammar

Wed 15th March

Dates coming up

Parent/Teacher Meetings

Wed/Thurs 1st/2nd
March from 3:40pm

Parent

Open Mornings

Tues 7th to Thursday
9th March. Why not
book half a day off
work now?

Reception trip

Tuesday 14th March
Lea Bridge Library

Weekly Events

Shining Stars Assembly

Every Monday at
9:10am.

Worship assembly

Every Thursday at
9:10am
(Fr Salvador).

Head of School drop in

Every Tuesday
8:30-9:30am and
3-4pm.

Monthly Mass

Please join us
monthly for school
Mass at

St Saviour's Church
Services run for
about an hour from
2pm on a Thursday
(unless
indicated)

23rd February
School Mass

1st March, Ash
Wednesday Liturgy,
Y1-3 9:15, Y4-6
1:30pm (both in
school).

April
tbc

25th May, Y4
Ascension

June, Y2
tbc

13th July, Y6
Leavers

Have a lovely week, best wishes

Executive Head Teacher

Deputy Head Teacher

Our Value of the week is: Love

'Love is all you need.'

John Lennon

Shining Stars



- Rec Oak - Frank Avramescu
- Rec Birch - Alexis Chung
- Y1 Willow - Veronika Mahurin
- Y1 Elm - Le'Asia Campbell-Adolph
- Y2 Birch - Anaiah Smith
- Y2 Oak - Jeremy Nketiah
- Y3 Willow - Alex Henry

- Y3 Elm - Jonathon Sadiq
- Y4 Oak - Maxx Boampensem
- Y4 Birch - Rafael Hotea & Iyannah Sheridan-Lowe
- Y5 Willow - Ashianna Wallace
- Y5 Elm - Taina Ridjali
- Y6 Birch - Laila Rose
- Y6 Oak - Elisei Gheorghie



Attendance

The whole school target for attendance is **96.5%**. Last week, we achieved **95.8%**. Please continue to help us to ensure that children are getting the best possible education by making sure that children are in school, where possible. Well done to Year 5 Elm whose attendance was 96.09%.

The class which was the most punctual last week was Year 6 Birch/Oak. Well done to them! They win our Early Bird Bears for the week.

We continue to have a major issue with lateness and attendance. Last week we had 70 incidents of lateness and **our overall attendance is now below the national average of 96.1%**. These figures are a clearly detrimental to our pupils' education. Letters are going out to parents/carers whose children's attendance is below 90%. We are nearly halfway through the year and 90% is equivalent to missing half a day's education every week. Please help us to improve this.



Class Corner - Year 3 Elm

It has been lovely hearing about all the fun our Year 3 Elm had over the half term and great to see everyone back and ready for an exciting term. We are looking forward to our trip to The Museum of London on 20th March 2017.

Before we broke up for half term our children had an exciting time in D&T making bread, we hope you enjoyed tasting it as much as the children did making it. Our Geography lessons were focussed on the countryside and its surroundings. Our focus for literacy was Beauty and the Beast, the children really showed great enthusiasm in learning about the book and all the characters involved.

Have a lovely week.

Miss Johnson-Walters

School Uniform

A small number of children are not wearing the correct school uniform, and there has been an increase in the number of hoodies and jogging bottoms being worn to school. Whilst hooded jackets may be worn as outdoor clothing, they do not replace school jumpers when children are in school. Please ensure that your child is wearing the correct uniform and has suitable outdoor wear for the cold and wet weather.

School uniform is as follows:

White shirt or polo shirt (tie optional)

Dark green jumper/cardigan with St Saviour's logo

Girls

Grey trousers or dark green skirt

Black or green tights/socks, black shoes

Boys

Grey trousers

Grey socks, black shoes

We always welcome spare school uniform, which may be handed to the school office.

Hello, my name is...

Now that we are quite a large school, we're acutely aware that parents (and some children) don't know who everyone is. We have our staff noticeboard in the foyer, so please take a moment to study that if you can. In addition, we're going to run a regular 'who's who' on these pages. This week we're looking at teachers. Teaching Assistants and other support staff to follow over the coming weeks.



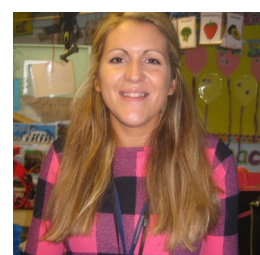
Helene Earnshaw
SENDCo



Holly Hanna
Rec Oak/EYFS leader



Melissa Stolz
Rec Birch



Lucy Small
Pre-School



Scott Elliott
Y1 Willow



Lorna Walsh
Y1 Elm



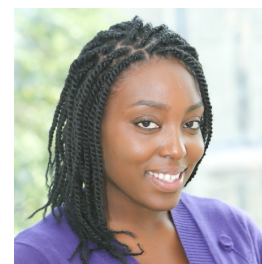
Gavin Murray
Y2 Oak



Laura Foster
Y2 Birch



Michaela Johnson-Walters
Y3 Elm



Cherrelle Woodley
Y3 Willow (M-W)



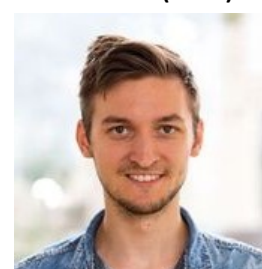
Maria Theoklitou
Y3 Willow (Th-Fr)



Nafisa Shabir
Y4 Birch



Alice Cope
Y4 Oak



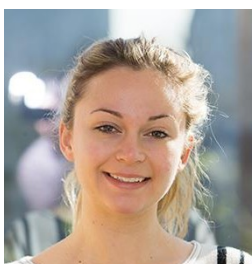
Nick Wognum
Y5 Willow



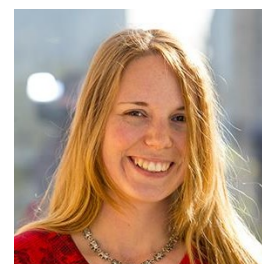
Martha Mackenzie
Y5 Elm



Ellie Ford
Y6 Oak



Caitlin Bosely
Y6 Birch



Patricia Crombie
Additional teacher

**Further additional
teachers (leadership,
see last week's list):
Julie Tolliday
Kate Dingle
Deborah Haworth
David Ogle**

Please give us your views on Ofsted's Parent View website

We've now had three recent responses to Parent View. Thank you to those people. We'd really appreciate it if you could go to <https://parentview.ofsted.gov.uk/> to register your opinions. Please see details below. As ever, if you have any particular concerns, please do raise these with your child's teacher, phase leader or a member of the Senior Leadership Team.

[Search for a different school](#)

[Preventing misuse](#)

[Terms of Use](#)

[How to use Parent View](#)

How to use Parent View

Log in / Register

You need your email address and password for the simple log-in process. Just follow the on-screen instructions.

We will send you an email with a link to activate your log-in.



Search

You can give your views about your child's school if it is a maintained school or an academy (including free schools), or a non-association independent school inspected by Ofsted.

To search for a school, just enter the name of the school and part of the address (road, city, town or postcode) in the search boxes when you are asked to.

Select your child's school from the search results.

Questionnaire

There will be 12 questions to answer, for example, 'My child is happy at this school' with a choice of responses:

- Strongly agree
- Agree
- Disagree
- Strongly disagree
- Don't know

Use the 'Next' button to move to the next question. If you change your mind you can use the 'Previous' button to go back.

Once you have completed all 12 questions, click on 'Finish the survey' and the questionnaire is complete.

Alerts

Registered users can sign up to receive an email when the results for a specific provider become publicly available and when there is a change in the number of responses after this. You can choose the frequency of the alerts at set up and by going to your profile.

How to complain

This survey is not designed to receive complaints about schools. If you wish to make a complaint or have a serious concern about your child's school, you can find more information on our [complaints page](#).

Parent View
Your child's school



[Home](#) [Give your views](#) [Parent View results](#) [Link to us](#)

[Contact Us](#)

[> Return to the main Ofsted website](#)

[Home > Give your views](#)

[Preventing misuse](#)

[Terms of Use](#)

[How to use Parent View](#)

Give your views

Register/log in

If you have already registered with Parent View, please log in to complete the questionnaire.

Email addresses are used to help prevent site misuse. Only Ofsted will have access to this information.

This survey is not designed to receive complaints about schools. If you wish to make a complaint or have a serious concern about your child's school, you can find more information about how to do so on our [complaints page](#).

Not registered yet?

If you haven't registered with Parent View yet, just fill out the simple form on the link below. You will then be able to log in and give your views.

[> Register now](#)

[> I have forgotten my password](#)

Please log in

If you have already registered, please enter your email address and password to log in.

Email address

Password

[Log in](#)



Spring Term 2017

Date	Event
03/01/2017	INSET - Tuesday 3rd January 2017
04/01/2017	School Starts 9.00am Wednesday 4th January 2017
13/02/2017	Half Term Monday 13th February to Friday 17th February 2017
20/02/2017	School Starts 9.00am Monday 20th February 2017
31/03/2017	School Closes Friday 31st March 2017 2pm

Summer Term 2017

Date	Event
03/04/2017	Easter Holidays Monday 3rd April to Monday 17th April 2017
18/04/2017	School Starts 9.00am Tuesday 18th April 2017
01/05/2017	May Day Bank Holiday
29/05/2017	Half Term Monday 29th May to Friday 2nd June 2017
05/06/2017	School Starts 9.00am Monday 5th June 2017
19/07/2017	School Closes Wednesday 19th July 2017 2pm

Autumn Term 2017

Date	Event
01/09/2017	INSET - Friday 1st September, Monday 4th & Tuesday 5th September 2017
06/09/2017	School Starts 9am Wednesday 6th September 2017
19/10/2017	School finishes for Half term Thursday 19th October 2017
20/10/2017	INSET DAY - Friday 20th October 2017
23/10/2017	Half Term Monday 23rd - Friday 27th October 2017
30/10/2017	School Starts 9am Monday 30th October 2017
20/12/2017	End of Term Finish 2pm Wednesday 20th December 2017
21/12/2017	Christmas Holidays Thursday 21st December - Tuesday 2nd January 2018