



St Saviour's C of E Primary School
33 Verulam Avenue, Walthamstow E17 8ER
Tel: 020 8520 0612
Email: school@st-saviours.waltham.sch.uk
Website: stsaviourscofe.org

Weekly Newsletter

Monday 6th
February 2017

Dear Parent/Carer,

Thank you to all of you who joined us for Education Sunday at St Saviour's Church yesterday. It was lovely to reflect on the importance of education for children in our school and beyond. And of course those who attended had the dubious pleasure of listening to me give a brief talk from Father Salvador's pulpit... unaccustomed as I am, and all that. I talked about our vision as a church school. For those of you who missed it, I'll be going through our Vision document in a parent workshop on 28th February.

Don't forget that we're in our last week of the first half of spring term. Doesn't time fly? That makes us pretty much halfway through the year already! We are currently compiling our curriculum letters for the second half of the spring term to keep you fully informed about the topics children will be studying next half term. So look out for those, which will be going out via email this week.

Easter school letters have been sent out to Year 6 children inviting them to come to St Saviour's for the first week of the Easter holidays. When I announced this to Year 6, they gave a great cheer which shows what an enthusiastic and hard-working bunch they are! They have been giving up their Saturday mornings to go to Saturday School since the autumn term, and many have been attending booster classes during the week. Well done Year 6 – keep up the hard work!

We'll also be running a free Easter school for Year 2 as well, with letters going out to parents/carers this week. Both Easter schools will be in the first week of the holidays – Monday 3rd to Thursday 6th April, from 8:45am (for a 9am start) to 12:30pm.

I'd like to welcome a new face on board today. Helen Earnshaw joins us as Special Educational Needs Coordinator (SENCo); some of you will have seen her at assembly this morning. SENCo is an increasingly involved role so we've decided Mr Crawford will focus mainly on St Mary's, with Miss Earnshaw taking over at St Saviour's.

Finally, a reminder about Parent Open Week on the mornings of Tuesday 7th to Thursday 9th March. Letters will go out towards the end of this week.

Have a great week!

David Ogle, Head of School

PS We've now had three recent responses to Parent View. Thank you to those people. We'd really appreciate it if you could take a look at page 5 and give your views online.

PPS Some may have seen that the police and traffic enforcement officers visited school during arrival time. Please remember, as I have said in this newsletter and in person, it is vital for our children's safety that parents/carers do not park on the zigzags or double yellow lines.

Parent Workshops:

4-4:30pm in 'The Cube' on Tuesdays

Christian Values

7th February
Mrs Woodley

Grammar

21st February
Ms Tolliday

School Vision

28th February
Mr Ogle

Science Workshop

7th March

History Projects

14th March

Rec-Y6 Calculation

Wed 15th March

Rec-Y6 Grammar

Wed 15th March

Dates coming up

Parent/Teacher Meetings

Wed/Thurs 1st/2nd March from 3:40pm

Parent

Open Mornings

Tues 7th to Thursday 9th March. Why not book half a day off work now?

Reception trip

Tuesday 14th March
Lea Bridge Library

School closes for half term on Friday 10th February & re-opens on Monday 20th February.

Weekly Events

Shining Stars Assembly

Every Monday at 9:10am.

Worship assembly

Every Thursday at 9:10am
(Fr Salvador).

Head of School drop in

Every Tuesday 8:30-9:30am and 3-4pm.

Monthly Mass

Please join us monthly for school Mass at St Saviour's Church. Services run for about an hour from 2pm on a Thursday (unless indicated)

23rd February School Mass

1st March, Ash Wednesday Liturgy, Y1-3 9:15, Y4-6 1:30pm (both in school).

25th May, Y4 Ascension

4th June, Y2 Pentecost

13th July, Y6 Leavers

Our Value of the week is: Respect

'A friend loves at all times, and a brother is born for a time of adversity.'

Proverbs 17:17

Have a lovely week, best wishes

Executive Head Teacher

Deputy Head Teacher

Shining Stars



Rec Oak - Otilia Sofia
Rec Birch - Adegboyega Ademola
Y1 Willow - Leke Aiyemo-Abiwo
Y1 Elm - Adelina Ciupitu
Y2 Birch - Theo Carroll
Y2 Oak - Jaquan Bailey
Y3 Willow - Teniola Atoyegbe

Y3 Elm - Kaleo Lewis
Y4 Oak - Zoe Aslam
Y4 Birch - Iyannah Sheridan-Lowe
Y5 Willow - Drunil Maisuria
Y5 Elm - Roshelle Blake
Y6 Birch - Rihanna Kabia
Y6 Oak - Pamela Oppong



Attendance

The whole school target for attendance is **96.5%**. Last week, we achieved **95.78%**. Please continue to help us to ensure that children are getting the best possible education by making sure that children are in school, where possible. Well done to Year 4 Birch whose attendance was 97.28%.

The class which was the most punctual last week was Year 6 Birch. Well done to them! They win our Early Bird Bears for the week.

We continue to have a major issue with lateness and attendance. Last week we had 70 incidents of lateness and **our overall attendance is now below the national average of 96.1%**. These figures are a clearly detrimental to our pupils' education. Letters are going out to parents/carers whose children's attendance is below 90%. We are nearly halfway through the year and 90% is equivalent to missing half a day's education every week. Please help us to improve this.



Class Corner Year 2 Birch

Year 2 Birch have had a great half term. We have especially enjoyed looking at our topic 'The Great Fire of London' and visiting The Museum of London to find out many more facts. Next half term, we will be focusing on shelter and utilities for Geography, and designing drawbridges and castles for our DT project. We are really looking forward to our DT topic on castles and drawbridges as we will be designing them and then creating them using many different materials. In PE this half term, we have been learning how to travel in different ways and use our height and body movements to create shapes for gymnastics. We have really enjoyed working with partners and in small groups to improve our special awareness and team work skills. In Science, we have been looking at Animals and Humans where we have explored life cycles and how we can keep ourselves healthy. We have started to look at a new topic in RE, Islam, and we are excited to find out more information when we return after half term.

Miss Foster, Year 2 Birch class teacher.

School Uniform

A small number of children are not wearing the correct school uniform, and there has been an increase in the number of hoodies and jogging bottoms being worn to school. Whilst hooded jackets may be worn as outdoor clothing, they do not replace school jumpers when children are in school. Please ensure that your child is wearing the correct uniform and has suitable outdoor wear for the cold and wet weather.

School uniform is as follows:

White shirt or polo shirt (tie optional)

Dark green jumper/cardigan with St Saviour's logo

Girls

Grey trousers or dark green skirt

Black or green tights/socks, black shoes

Boys

Grey trousers

Grey socks, black shoes

We always welcome spare school uniform, which may be handed to the school office.

Hello, my name is...

Now that we are quite a large school, we're acutely aware that parents (and some children) don't know who everyone is. We have our staff noticeboard in the foyer, so please take a moment to study that if you can. In addition, we're going to run a regular 'who's who' on these pages. We'll start this week with our Senior Leadership Team and office staff. And Mr Parker, who I'm sure you all know! Other teachers as well as Teaching Assistants and other support staff to follow over the coming weeks.



Beverley Hall
Executive Head



David Ogle
Head of School



Kerry Munden
Associate Head—Federation



Julie Tolliday
Deputy Head



Kate Dingle
Assistant Head



Deborah Haworth
Assistant Head



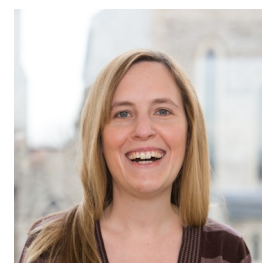
Gavin Murray
**Leader of Learning
and Behaviour**



Laura Foster
Year 1-3 Phase Leader



Louise Price
Office Manager
**Nursery Admissions
Manager**



Heather Fleetwood
HR Manager/PA



Freddie Bines
**Admissions and
Attendance Manager**



Shayna Holder
**Junior Admin and
HR assistant**



Kevin Parker
Site Service Officer



Gina Arnell
**Child & Family
Liaison Manager**



Tollah Joda
Learning Mentor

Please give us your views on Ofsted's Parent View website

We've now had three recent responses to Parent View. Thank you to those people. We'd really appreciate it if you could go to <https://parentview.ofsted.gov.uk/> to register your opinions. Please see details below. As ever, if you have any particular concerns, please do raise these with your child's teacher, phase leader or a member of the Senior Leadership Team.

Search for a different school

Preventing misuse

Terms of Use

How to use Parent View

How to use Parent View

Log in / Register

You need your email address and password for the simple log-in process. Just follow the on-screen instructions.

We will send you an email with a link to activate your log-in.



Search

You can give your views about your child's school if it is a maintained school or an academy (including free schools), or a non-association independent school inspected by Ofsted.

To search for a school, just enter the name of the school and part of the address (road, city, town or postcode) in the search boxes when you are asked to.

Select your child's school from the search results.

Questionnaire

There will be 12 questions to answer, for example, 'My child is happy at this school' with a choice of responses:

- Strongly agree
- Agree
- Disagree
- Strongly disagree
- Don't know

Use the 'Next' button to move to the next question. If you change your mind you can use the 'Previous' button to go back.

Once you have completed all 12 questions, click on 'Finish the survey' and the questionnaire is complete.

Alerts

Registered users can sign up to receive an email when the results for a specific provider become publicly available and when there is a change in the number of responses after this. You can choose the frequency of the alerts at set up and by going to your profile.

How to complain

This survey is not designed to receive complaints about schools. If you wish to make a complaint or have a serious concern about your child's school, you can find more information on our [complaints page](#).

Parent View
Your child's school



[Home](#) [Give your views](#) [Parent View results](#) [Link to us](#)

[Contact Us](#)

[Return to the main Ofsted website](#)

[Home](#) > [Give your views](#)

Preventing misuse

Terms of Use

How to use Parent View

Give your views

Register/log in

If you have already registered with Parent View, please log in to complete the questionnaire.

Email addresses are used to help prevent site misuse. Only Ofsted will have access to this information.

This survey is not designed to receive complaints about schools. If you wish to make a complaint or have a serious concern about your child's school, you can find more information about how to do so on our [complaints page](#).

Not registered yet?

If you haven't registered with Parent View yet, just fill out the simple form on the link below. You will then be able to log in and give your views.

[Register now](#)

[I have forgotten my password](#)

Please log in

If you have already registered, please enter your email address and password to log in.

Email address

Password

[Log in](#)



Spring Term 2017

Date	Event
03/01/2017	INSET - Tuesday 3rd January 2017
04/01/2017	School Starts 9.00am Wednesday 4th January 2017
13/02/2017	Half Term Monday 13th February to Friday 17th February 2017
20/02/2017	School Starts 9.00am Monday 20th February 2017
31/03/2017	School Closes Friday 31st March 2017 2pm

Summer Term 2017

Date	Event
03/04/2017	Easter Holidays Monday 3rd April to Monday 17th April 2017
18/04/2017	School Starts 9.00am Tuesday 18th April 2017
01/05/2017	May Day Bank Holiday
29/05/2017	Half Term Monday 29th May to Friday 2nd June 2017
05/06/2017	School Starts 9.00am Monday 5th June 2017
19/07/2017	School Closes Wednesday 19th July 2017 2pm

Autumn Term 2017

Date	Event
01/09/2017	INSET - Friday 1st September, Monday 4th & Tuesday 5th September 2017
06/09/2017	School Starts 9am Wednesday 6th September 2017
19/10/2017	School finishes for Half term Thursday 19th October 2017
20/10/2017	INSET DAY - Friday 20th October 2017
23/10/2017	Half Term Monday 23rd - Friday 27th October 2017
30/10/2017	School Starts 9am Monday 30th October 2017
20/12/2017	End of Term Finish 2pm Wednesday 20th December 2017
21/12/2017	Christmas Holidays Thursday 21st December - Tuesday 2nd January 2018