



St Saviour's C of E Primary School
33 Verulam Avenue, Walthamstow E17 8ER
Tel: 020 8520 0612
Email: school@st-saviours.waltham.sch.uk
Website: stsaviourscofe.org

Weekly Newsletter

Monday 30th
January 2017

Dear Parent/Carer,

I'd like to start with a big smile and a thank you to several of our pupils and parents! You may be aware that last week St Saviour's was selected to be part of an Ofsted inspection of provision for Special Educational Needs and Disability in the borough of Waltham Forest. We are very proud of all our children and were keen to show how well they are supported to enable them to achieve their very best, as well as enjoying school life.

The Ofsted inspector had a chat with a range of children while she was here and parents of children with differing educational needs were invited in to meet her. I would like to say a huge thank you to those parents who gave up their time to attend this meeting. It was essentially an inspection of the Borough rather than the school but obviously we needed to satisfy Ofsted that our SEND provision is good or better and I'm very grateful for the kind things said by parents/carers – including that we are approachable and listen to and sort out concerns. We await the outcome of this inspection and will let you know some time in the future.

Speaking of provision, we still have spaces in some of our clubs at the moment. We'll be sending out notification directly about which clubs have space. Please consider signing up. It is difficult to justify the expense of running clubs for small numbers at a time of educational funding cuts. I hope you and your kids are getting used to our homework being online (apart from learning spellings, times tables and number bonds and an encouragement to read books at home). If you are struggling, or are interested in finding out more, please come to tomorrow's parent workshop. It starts at 4pm in The Cube.

Take a look at page 4 for this term's school meals. Next week we'll be sending out curriculum newsletters for each year group outlining children's learning next half term. We only have two weeks left before the half term holiday. We close at the normal time on Friday 10th February and reopen on Monday 20th February.

Please have a look at page 2. I'm very concerned about levels of lateness and absence at St Saviour's. I am again writing to all parents whose children are regularly late or whose attendance is below 90%. It's essential, for the benefit of all pupils' education, that they have high levels of attendance and arrive promptly at school. Please aim to be here between 8:45 and 8:55am.

And finally... last Friday, children across the school were treated to a fun science afternoon when we invited in a science-based show for them. We like to invite in people from time to time to give the children something different: a bit of education, some interaction and a lot of fun. Years 3 – 6 had a 'superhero' themed presentation – in this case, the superheroes were those people whose skills make our world a better place, like engineers. Children were given the opportunity to build super-strong bridges using blocks.

Key stage 1 and Reception had a show about forces and gravity called 'Bubbles and Balloons' in which enormous bubbles were wafted across the hall. Apparently, you can pierce a balloon with a stick and it won't burst if you know where to place it (at the end with the knot) so do try this at home folks! Anyway, it was a lovely ending to the week.

David Ogle, Head of School

Our Value of the week is: Faith

"Yes I've gotta have faith; I gotta faith,

"Because I gotta to have faith, faith, faith; I gotta have faith, faith, faith"

George Michael, pop genius and reclusive benefactor

Parent Workshops:

All run 4-4:30pm in
'The Cube'
(Y6 portacabins) on
Tuesdays

Online training

31st January 2017
Ms McPharlane

School Christian Values

7th February 2017
Mrs Woodley

Grammar

21st February 2017
Ms Tolliday

School Vision

28th February 2017
Mr Ogle

Science Workshop

7th March 2017

History Projects

14th March 2017

*Dates
coming up*

Parent/Teacher Meetings

Wed/Thurs 1st/2nd
March from 3:40pm

Parent

Open Mornings

Tues 7th to Thursday
9th March. Why not
book half a day off
work now?

Reception trip

Tuesday 14th March
Lea Bridge Library

**School closes for half
term on Friday 10th
February and reopens
on Monday 20th
February.**

Weekly Events

Shining Stars Assembly

Every Monday at
9:10am.

Worship assembly

Every Thursday at
9:10am
(Fr Salvador).

Head of School drop in

Every Tuesday
8:30-9:30am and
3-4pm.

Monthly Mass

**Please join us
monthly for school
Mass at
St Saviour's Church**
Services run for
about an hour from
2pm on a Thursday
(unless
indicated)

5th Feb Education
Sunday 9:30am

23rd February
School Mass

1st March, Ash
Wednesday Liturgy,
Y1-3 9:15, Y4-6
1:30pm (both in
school).

25th May, Y4
Ascension

4th June, Y2
Pentecost

13th July, Y6
Leavers

Have a lovely week, best wishes

Executive Head Teacher

Deputy Head Teacher

Shining Stars

Rec Oak- Yi Xuan Guan
Rec Birch- Gabriel Mateiu
Y1 Willow - Noah Ene-Richardson
Y1 Elm - Toby Gentles
Y2 Birch - Jay-Anne Facey
Y2 Oak - Jeremiah Ofosu
Y3 Willow - Malachi Grant Raphael

Y4 Oak - Vasile Hantig
Y4 Birch - T'Juan Murray-Bascoe
Y5 Willow - Maria Piticar
Y5 Elm - Trishti Sonoo
Y6 Birch - Kamali Cornelius
Y6 Oak- Oladipo Akinwale

Attendance

The whole school target for attendance is **96.5%**. Last week, we achieved **95.4%**. Please continue to help us to ensure that children are getting the best possible education by making sure that children are in school, where possible. Well done to Year 2 Oak whose attendance was 96.15%.

The class which was the most punctual last week was Year 6 Birch. Well done to them! They win our Early Bird Bears for the week.

We continue to have a major issue with lateness and attendance. Last week we had 70 incidents of lateness and **our overall attendance is now below the national average of 96.1%**. These figures are a clearly detrimental to our pupils' education. Letters are going out to parents/carers whose children's attendance is below 90%. We are nearly halfway through the year and 90% is equivalent to missing half a day's education every week. Please help us to improve this.



Year 1 Elm Class Corner

In RE we have been learning more about Jesus and why he is important to Christians. We have been reflecting on who is special in our own lives. We have discussed how we show special people that they are important to us.

Our exciting Science topic has seen the children investigating and learning about different materials. We have discussed why certain objects are made from particular materials. Our next step is to design our own spaceship and discuss what materials we would use to build it. We also enjoyed our science workshop on Friday where we learnt more science facts.

Our Topic for this term is about Transport and we have enjoyed learning about transport from the past and how it has changed from then to now. Next time you are in for parent assembly, check out our transport display.

This term in Literacy we have enjoyed learning about Beauty and the Beast. We have been writing a letter from one character to another. We are going to be focusing on Jack in the Beanstalk next half term.

Miss Walsh, class teacher

Before and After School Clubs

Before and after school clubs are now running.

Thank you to those parents who have returned letters requesting places. There are still a few spaces in some of the clubs. Please enquire in the office if you are interested.

Breakfast and Tea Time Club are, as usual, dealt with separately.



Spare school uniform

If you have any unwanted school uniform for children under 6 years, please could you donate this to our preschool team; this will include pants/knickers as we are always running short. If you hand items into the office, they can be passed on for you. Thank you for your support in this.

The C of E Federated Schools of St Mary's and St. Saviour's



St Mary's
Brooke Road
Walthamstow
E17 9HJ

Tel: 020 8521 1066
Fax: 020 8521 0756

E-mail: school@st-marys-coe.waltham.sch.uk

St Saviour's
Verulam Avenue
Walthamstow
E17 8ER

Tel: 020 8520 0612
Fax: 020 8520 7822

E-mail: school@st-saviours.waltham.sch.uk



Dear Parent/Carer,

Online safety and keeping your child safe: 'Musical.ly': key information for parents/carers

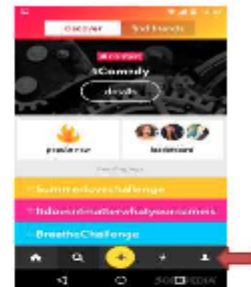
The Federated Schools of Saint Mary's and Saint Saviour's are committed to keeping our children safe and to promoting the safe, responsible use of the technologies. Currently a letter warning against **'Musical.ly'** - a video sharing app which allows users to share 15 second videos of them singing, dancing or doing comedy sketches – is being posted and shared on social media which you may be aware of.

The app is popular with creative people who enjoy sharing their talents as it allows users to showcase their performances with friends and receive positive feedback. Once a video has been made, a user can add a range of fun editing effects to it to make it stand out. Videos are referred to as 'musicals' and the aim – for many users – is to become a 'featured top user' with a large amount of likes and fans. Many celebrities also have profiles on Musical.ly.

Like other social networks, users can follow others, comment and like videos on the app. As such, we feel it is our responsibility to raise this particular app as a concern if used without discussion about online safety and/or supervision and offer the following advice for those whose children may be using the app and community for fun, to be creative and to make friends.

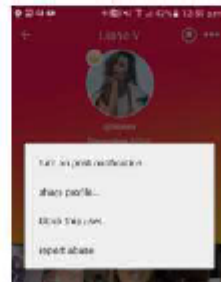
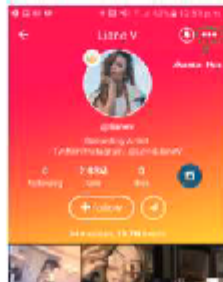
Privacy settings

Users can make their Musical.ly account private, which will restrict access to their videos so that they are only available to people who they have approved. To make an account private, go to the user's Musical.ly profile (by tapping the 'head' icon at the bottom of the screen) and then tap on the settings gear icon in the top right hand corner. Select Settings > Private Account. Once this is selected, the user will then have to approve anyone who wishes to follow them and view their musicals.



Blocking a user

If your child is receiving unwanted messages or comments, they can block the user on the app. You can block a user by going to their profile and selecting the icon with three dots on the right hand corner and then choosing 'block this user'.



Please give us your views on Ofsted's Parent View website

We received some great feedback at the last parents evening in November. Thank you. We'd really appreciate it if you could go to <https://parentview.ofsted.gov.uk/> to register your opinions. Please see details below. As ever, if you have any particular concerns, please do raise these with your child's teacher, phase leader or a member of the Senior Leadership Team.

[Search for a different school](#)

[Preventing misuse](#)

[Terms of Use](#)

[How to use Parent View](#)



How to use Parent View

Log in / Register

You need your email address and password for the simple log-in process. Just follow the on-screen instructions.

We will send you an email with a link to activate your log-in.

Search

You can give your views about your child's school if it is a maintained school or an academy (including free schools), or a non-association independent school inspected by Ofsted.

To search for a school, just enter the name of the school and part of the address (road, city, town or postcode) in the search boxes when you are asked to.

Select your child's school from the search results.

Questionnaire

There will be 12 questions to answer, for example, 'My child is happy at this school' with a choice of responses:

- Strongly agree
- Agree
- Disagree
- Strongly disagree
- Don't know

Use the 'Next' button to move to the next question. If you change your mind you can use the 'Previous' button to go back.

Once you have completed all 12 questions, click on 'Finish the survey' and the questionnaire is complete.

Alerts

Registered users can sign up to receive an email when the results for a specific provider become publicly available and when there is a change in the number of responses after this. You can choose the frequency of the alerts at set up and by going to your profile.

How to complain

This survey is not designed to receive complaints about schools. If you wish to make a complaint or have a serious concern about your child's school, you can find more information on our [complaints page](#).

Parent View
Your child's school



[Home](#) [Give your views](#) [Parent View results](#) [Link to us](#)

[Contact Us](#)

[Return to the main Ofsted website](#)

[Home](#) > [Give your views](#)

[Preventing misuse](#)

[Terms of Use](#)

[How to use Parent View](#)



Give your views

Register/log in

If you have already registered with Parent View, please log in to complete the questionnaire.

Email addresses are used to help prevent site misuse. Only Ofsted will have access to this information.

This survey is not designed to receive complaints about schools. If you wish to make a complaint or have a serious concern about your child's school, you can find more information about how to do so on our [complaints page](#).

Not registered yet?

If you haven't registered with Parent View yet, just fill out the simple form on the link below. You will then be able to log in and give your views.

- [Register now](#)
- [I have forgotten my password](#)

Please log in

If you have already registered, please enter your email address and password to log in.

Email address

Password

[Log in](#)



Waltham Forest Catering Autumn/Winter Primary Menu 2016/17

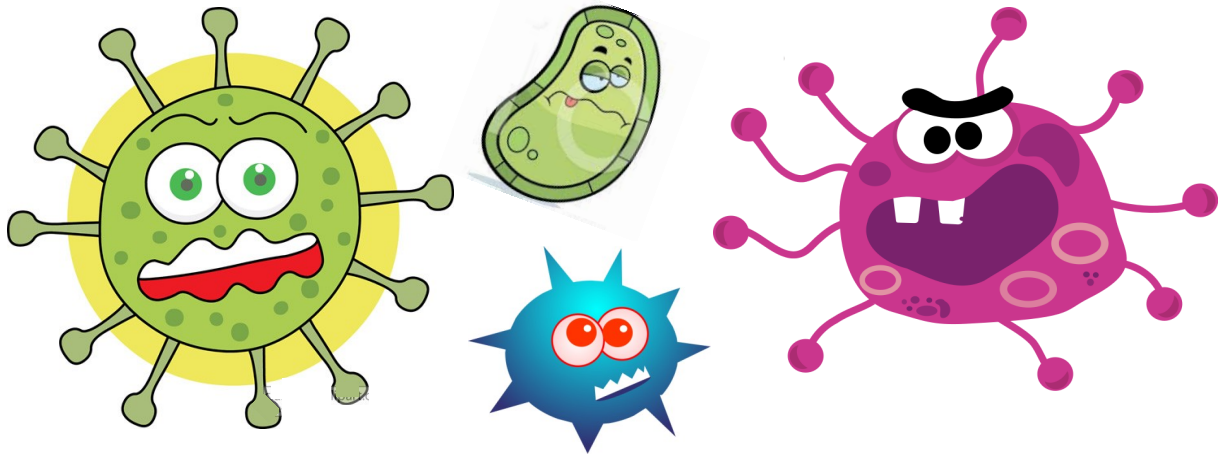
Week Commencing, 31.10.16. 21.11.16. 12.12.16. 9.1.17. 30.1.17. 27.2.17. 20.3.17.



	Monday	Tuesday	Wednesday	Thursday	Friday
Main choice	<ul style="list-style-type: none"> Autumn Garden Pizza 	<ul style="list-style-type: none"> Chicken Korma 	<ul style="list-style-type: none"> Moroccan Lamb Tagine 	<ul style="list-style-type: none"> Piri Piri Chicken & Potato 	<ul style="list-style-type: none"> Fish Fingers 
Vegetarian choice	<ul style="list-style-type: none"> Quorn spaghetti bolognaise 	<ul style="list-style-type: none"> Street Style Vegetable Noodles 	<ul style="list-style-type: none"> Vegetable samosa 	<ul style="list-style-type: none"> Homemade Cheese and Sweetcorn Quiche 	<ul style="list-style-type: none"> Quorn Sausage in a Roll
Alternative choice		<ul style="list-style-type: none"> Salmon Fillet in Wholemeal Crumb  	<ul style="list-style-type: none"> Macaroni Cheese 	<ul style="list-style-type: none"> Homemade Battered fish with Lemon garnish. 	
Sides	<ul style="list-style-type: none"> Wholewheat Spaghetti Jacket Wedges 	<ul style="list-style-type: none"> Creamed Potatoes Rice 	<ul style="list-style-type: none"> Mixed Rice 	<ul style="list-style-type: none"> Mixed Rice Half Jacket Potato 	<ul style="list-style-type: none"> Chipped Potatoes
Unlimited Vegetables	<ul style="list-style-type: none"> Garden Peas Sweetcorn 	<ul style="list-style-type: none"> Fresh Seasonal Broccoli Organic Seasonal Carrots 	<ul style="list-style-type: none"> Whole Green Beans Fresh Seasonal Cabbage 	<ul style="list-style-type: none"> Sugar Snap Peas Roast Butternut Squash 	<ul style="list-style-type: none"> Garden Peas Baked Beans
Unlimited Seasonal Salad Selection	<ul style="list-style-type: none"> Fresh salads and Bread 	<ul style="list-style-type: none"> Fresh salads from salad selection 	<ul style="list-style-type: none"> Fresh salads from salad selection 	<ul style="list-style-type: none"> Fresh salads from salad selection 	<ul style="list-style-type: none"> Fresh salads from salad selection
Desserts	<ul style="list-style-type: none"> Sliced Peaches with Custard Organic Fruit Yogurt Seasonal Fresh Fruit Platter 	<ul style="list-style-type: none"> Chocolate & Beetroot Traybake with Organic Milk and Fresh Fruit Cheese, Biscuits and Grapes Seasonal Fresh Fruit Platter 	<ul style="list-style-type: none"> Homemade shortbread Biscuits with Organic Milk and Fresh Fruit Organic Fruit Yogurt Seasonal Fresh Fruit Platter 	<ul style="list-style-type: none"> Finger of Ginger Cake & Custard with Fresh Fruit Fruit in Jelly Seasonal Fresh Fruit Platter 	<ul style="list-style-type: none"> Dorset Apple cake with custard Organic Fruit Yogurt Seasonal Fresh Fruit Platter

Homemade bread will accompany all meals. All bread, cakes, pizza bases and pastry are freshly made using organic flour.
 N.B. Where halal meat has been requested by the school, it is HFA certified (or equivalent)
 Information on allergens present in this menu is available at www.walthamforest.gov.uk/schoolmeals or at the school





Urgh! It's that time of year again!

You won't need us to tell you that one of the 'joys' of having small children is their tendency to vomit and poo violently. It's the time of year when viruses, infections and various nasties seem to have a greater chance of catching and spreading. Here's some advice for parents/carers. Take care of yourselves out there!

Diarrhoea and vomiting in children

Keep kids home from school for



after symptoms have passed. This is enough time to let the virus run its course

If your child already has a serious illness, or symptoms last longer than a few days, contact your GP to seek advice



You don't need to visit the GP for stomach bugs such as **Norovirus**. Symptoms usually clear up in a few days.



Visit [nhs.uk/norovirus](https://www.nhs.uk/norovirus) for advice on managing the spread of Norovirus



Home Treatment



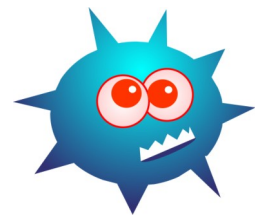
Paracetamol is useful for fever or aches and pains



Give kids plenty of water to stay hydrated and replace lost fluids



If your child feels like eating, give them familiar foods



Spring Term 2017

Date	Event
03/01/2017	INSET - Tuesday 3rd January 2017
04/01/2017	School Starts 9.00am Wednesday 4th January 2017
13/02/2017	Half Term Monday 13th February to Friday 17th February 2017
20/02/2017	School Starts 9.00am Monday 20th February 2017
31/03/2017	School Closes Friday 31st March 2017 2pm

Summer Term 2017

Date	Event
03/04/2017	Easter Holidays Monday 3rd April to Monday 17th April 2017
18/04/2017	School Starts 9.00am Tuesday 18th April 2017
01/05/2017	May Day Bank Holiday
29/05/2017	Half Term Monday 29th May to Friday 2nd June 2017
05/06/2017	School Starts 9.00am Monday 5th June 2017
19/07/2017	School Closes Wednesday 19th July 2017 2pm

Autumn Term 2017

Date	Event
01/09/2017	INSET - Friday 1st September, Monday 4th & Tuesday 5th September 2017
06/09/2017	School Starts 9am Wednesday 6th September 2017
19/10/2017	School finishes for Half term Thursday 19th October 2017
20/10/2017	INSET DAY - Friday 20th October 2017
23/10/2017	Half Term Monday 23rd - Friday 27th October 2017
30/10/2017	School Starts 9am Monday 30th October 2017
20/12/2017	End of Term Finish 2pm Wednesday 20th December 2017
21/12/2017	Christmas Holidays Thursday 21st December - Tuesday 2nd January 2018