

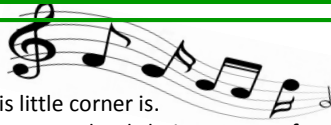


St Saviour's C of E Primary School
33 Verulam Avenue, Walthamstow E17 8ER
Tel: 020 8520 0612
Email: school@st-saviours.waltham.sch.uk
Website: stsaviourscofe.org

Monday 23rd
January 2017

Weekly Newsletter

Dear Parent/Carer,



The 'Stow is alive with the sound of music! Well, this little corner is.

On Thursday last week, I'm very proud to boast that our school choir was one of those which took part in a massive concert at the O2 Arena in Greenwich as part of the Young Voices string of young people's choir concerts. Well done to all the children involved and thank you to our music specialist Ms Baron for her organisation and to Mrs Howarth and Mrs Anderson who also went along to supervise and enjoy, they – and of course the kids – had quite a late night travelling back from the O2 on Thursday night. See more about their exploits on page three. You can hear the choir perform at this Friday's assembly, at 9:10am. I hope you can come along.

I also hope that you received the letter emailed last week inviting your child to take part in individual music tuition in piano, violin or guitar. As you'll perhaps know, we had to cancel our classes provided by the local authority's music service due to there being a very small demand. We've now linked up with Piano Fun Club, which provides shorter, more affordable lessons and we hope that this will increase interest. It's an amazing thing to be able to play an instrument: as well as a fantastic outlet for a child's creativity, it encourages tenacity and resilience. I'm also hoping to restart our after school ukulele club. This would be on a Monday but first depends on sufficient numbers for the private tuition of guitar and/or piano. I'll send out an invite letter once we have a firm idea that there are sufficient numbers for private tuition. Lessons will begin after half term. I would hope, but cannot guarantee, that we'll get ukulele club sorted to start at the same time. Priority will be given to those children who were already involved in last year's ukulele club.

If you didn't receive the emailed letter, please see the office for a copy and please ensure that your correct email address is on our system. You may be able to help by emailing school@st-saviours.waltham.sch.uk with your correct email address, stating the name, year and class of your child(ren).

While I'm on an e-kick (get me kids!) can I make another appeal for parents to register their views on ParentView? We are expecting a whole-school Ofsted inspection any time now (we're slightly overdue). I, and the local authority, feel strongly that we'll come out as outstanding. Hopefully you feel that your child is making good progress at school and is safe; perhaps you've attended our frequent parent workshops? We've not had any entries since 213/14. Teachers and staff are working incredibly hard to get St Saviour's children off to the best possible start before entering secondary school. Please see page three for how to give your views.

Back to music (and, of course, worship) on Thursday, Year 5 led our Mass in church, where they did a very confident presentation based on their work on Jesus' miracles, which they have been studying as part of their RE topic this term. As usual, St Saviour's children did us all proud with their great behaviour and fine singing. We'd also like to thank Canon Alex Summers who led the service as Father Salvador was away on church business.

On the same day, Year 2 went on a very successful trip to the Museum of London to see the 'Fire! Fire!' exhibition as part of their topic on the Great Fire of London. There were paintings and artefacts from the time of the fire, including a 'fire squirt' (or 'hose' to you and me). Museums seem to be very interactive these days and the children had the opportunity to dress up in 17th century clothes and rebuild London using blocks, in a such a way that it would not be at risk of being destroyed by fire. Anyway, it all sounds like too much fun to me – museums were never like that in my day! Thank you to the parents who came along and supported the children – I'm sure you enjoyed it as much as the children did.

Gan canny. (Google it)

David Ogle, Head of School

Parent Workshops:

All run 4-4:30pm in 'The Cube' (Y6 portacabins)

Online training

31st January 2017
Ms McPharlane

School Christian Values

7th February 2017
Mrs Woodley

Grammar

21st February 2017
Ms Tolliday

School Vision

28th February 2017
Mr Ogle

Science Workshop

7th March 2017

History Projects

14th March 2017

Dates coming up

Parent/Teacher Meetings

Wed/Thurs 1st/2nd March from 3:40pm

Parent Open Mornings

Tues 7th to Thursday 9th March. Why not book half a day off work now?

Reception trip

Tuesday 14th March
Lea Bridge Library

Weekly Events

Shining Stars Assembly

Every Monday at 9:10am.

Worship assembly

Every Thursday at 9:10am (Fr Salvador).

Head of School drop in

Every Tuesday 8:30-9:30am and 3-4pm.

Monthly Mass

Please join us monthly for school Mass at St Saviour's Church.

Services run for about an hour from 2pm (unless indicated)

19th Jan (2pm) Y5.
5th Feb Education Sunday 9:30am.

1st March, Ash Wednesday, Y1-3 9:15, Y4-6 1:30pm (both in school).

12th April, Y3.

25th May, Y4, Ascension.

4th June, Y2 Pentecost

13th July, Y6 Leavers

Have a lovely week, best wishes

Executive Head Teacher

Deputy Head Teacher

Our Value of the week is tenacity:

"Keep a close watch on yourself and on the teaching. Persist in this, for by so doing you will save both yourself and your hearers."

Timothy 4:16

Shining Stars

Rec Oak- Adetona Atoyegbe

Rec Birch: Edward Popa

Y1 Willow - Alica Zurek

Y1 Elm - Chloe Anderson

Y2 Birch - Grace Bassi

Y2 Oak - Junyu Cai

Y3 Willow - Scott Joseph

Yaacoub Latif

Y3 Elm - Cornelia Wilczewska

Y4 Oak - Nate Ford

Y4 Birch - Anita Nwaohai

Y5 Willow - Yacob Zurek

Y5 Elm - Anwar Yousef

Y6 Birch - Jermine Antwi-Adjei

Y6 Oak- Jayda Charlery-Douglas

Attendance

The whole school target for attendance is **96%**. Last week, we achieved **95.7%**! Please continue to help us to ensure that children are getting the best possible education by making sure that children are in school, where possible.

Well done to Year 4 Oak whose attendance was 99.17%.

Class Corner - Year 1 Willow

In Year 1 Willow this half term, we have been learning about Transport through the ages. On our wow day, we created our own models of our favourite transport using plasticine and we are looking forward to designing and making moving vehicles in DT. We will also be making a trip to the Pumphouse Museum in Walthamstow this term to see real steam engines in action.

After watching the exciting pantomime version of Beauty and the Beast before Christmas, we have been focussing more on the fairy-tale and using this to inspire our writing in literacy.

Mr Elliott.

Before and After School Clubs

Before and after school clubs are now running. Thank you to those parents who have returned letters requesting places. There are still a few spaces in some of the clubs. Please enquire in the office if you are interested.

Breakfast and Tea Time Club are, as usual, dealt with separately.



Spare school uniform

If you have any unwanted school uniform for children under 6 years, please could you donate this to our preschool team; this will include pants/knickers as we are always running short. If you hand items into the office, they can be passed on for you. Thank you for your support in this.

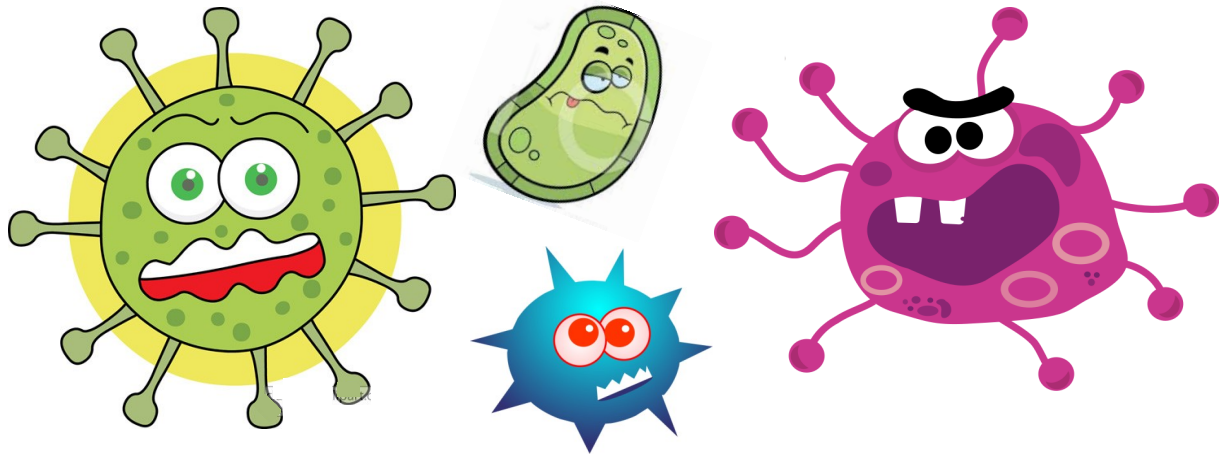
Move over Gareth Malone—St Saviour’s kids rock the O2!

The joint choirs of the Federation attended the Young Voices event at the O2 on Thursday evening. This mass choir event has been running for 21 highly successful years.

The 50 members of the joint choir, who had been taught the songs and dance moves by Miss Baron, left school at lunchtime and attended a full rehearsal of the choirs of some 40 schools totalling 7,450 children. After a short break for food we returned to the auditorium for the concert, alongside professional dancers, singers, beat boxers and musicians, in front of an audience made up of friends and family.

It was a fantastic event, which our children and staff really enjoyed and we thank the parents for their support.





Urgh! It's that time of year again!

You won't need us to tell you that one of the 'joys' of having small children is their tendency to vomit and poo violently. It's the time of year when viruses, infections and various nasties seem to have a greater chance of catching and spreading. Here's some advice for parents/carers.

Take care of yourselves out there!

Diarrhoea and vomiting in children

Keep kids home from school for



after symptoms have passed. This is enough time to let the virus run its course

If your child already has a serious illness, or symptoms last longer than a few days, contact your GP to seek advice



Washing hands frequently and thoroughly helps limit the spread of the virus

You don't need to visit the GP for stomach bugs such as **Norovirus**. Symptoms usually clear up in a few days.



Visit [nhs.uk/norovirus](https://www.nhs.uk/norovirus) for advice on managing the spread of Norovirus



Home Treatment



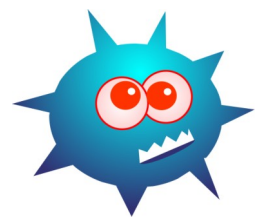
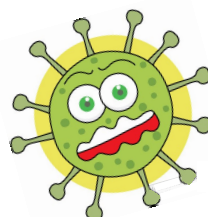
Paracetamol is useful for fever or aches and pains



Give kids plenty of water to stay hydrated and replace lost fluids



If your child feels like eating, give them familiar foods



The C of E Federated Schools of St Mary's and St Saviour's



St Mary's
Brooke Road
Walthamstow
E17 9HJ

Tel: 020 8521 1066
Fax: 020 8521 0756

E-mail: school@st-marys-coe.waltham.sch.uk

St Saviour's
Verulam Avenue
Walthamstow
E17 8ER

Tel: 020 8520 0612
Fax: 020 8520 7822

E-mail: school@st-saviours.waltham.sch.uk



Dear Parent/Carer,

Child safety and cars outside the school gates

Following continued issues of pedestrians (especially our children) and cyclists having near misses with cars outside of school at the beginning and end of the day, I'm writing to implore motorists to help keep children safe.

Please do not park on the zigzag or double yellow lines. These are in place, as with all schools, to ensure there is a clear view of the road for pedestrians crossing the road.

Please consider walking, cycling or catching the bus to school. The position of the school – in a cul-de-sac - is not ideal. There are no options for alternative entrances. We'll always have limited capacity for cars.

If you feel that you have to drive, **please park a street or two away or in the Walthamstow (Kelmscott) Leisure Centre car park**. The streets immediately to the north of St Saviour's are not controlled parking. It would be massively helpful if more parents/carers would **walk the last hundred metres** or so to school to avoid congestion outside of the school gates.

Please do not stop in the middle of the road. This holds up other road users – other parents/carers and local residents - and leads to delays for others, frayed nerves and tempers.

Please aim to arrive between 8:30 and 8:50/55 (Y1-6) including if you are walking/cycling/bussing. We continue to have a huge issue of late arrivals. I've written elsewhere about the disruption this causes to children and their education. It also causes a surge of people arriving at the last moment in a hurry. Children need to be in school on time. The whistle goes at 9am promptly (Y1-6). Traffic in Walthamstow is frequently congested. **I must insist that parents/carers make plans to get up earlier to ensure they arrive at school in time.**

Please observe carefully before opening doors. Pedestrians and cyclists have come very close to being hit due to this. Please let children and adults pass before opening your door.

Please observe carefully and indicate before pulling out, and do not edge forward or reverse when children or adults are around your car. We have had reports of motorists doing this outside school.

Please be polite and considerate to each other. We get frequent reports of angry exchanges. Do be aware that every parent/carers is trying their best to do to look after their child.

Please do not lose your temper with or abuse school staff if you are parked illegally or arrive at school late. It is our statutory duty to record late arrivals and our moral duty to ensure that the approach to school is safe. We are doing both of these for the benefit of all the children in school, please do understand this.

Thank you to the majority of parents/carers who are doing their best and do drive and park responsibly and arrive at school on time. I am sorry that this letter is rather akin to a lecture and is quite long. I hope that you will all understand the importance of pupil safety and why I need to continue to flag up this issue. I had several comments from parents this morning that the situation was better because I was at the gate. **I have had to ask parking enforcement and the Markhouse Ward dedicated police officer to get involved in this.** I would hope that we can all work as a team to solve this together, permanently.

Yours faithfully,

DAVID OGLE
Head of School

Please give us your views on Ofsted's Parent View website

We received some great feedback at the last parents evening in November. Thank you. We'd really appreciate it if you could go to <https://parentview.ofsted.gov.uk/> to register your opinions. Please see details below. As ever, if you have any particular concerns, please do raise these with your child's teacher, phase leader or a member of the Senior Leadership Team.

[Search for a different school](#)

[Preventing misuse](#)

[Terms of Use](#)

[How to use Parent View](#)



How to use Parent View

Log in / Register

You need your email address and password for the simple log-in process. Just follow the on-screen instructions.

We will send you an email with a link to activate your log-in.

Search

You can give your views about your child's school if it is a maintained school or an academy (including free schools), or a non-association independent school inspected by Ofsted.

To search for a school, just enter the name of the school and part of the address (road, city, town or postcode) in the search boxes when you are asked to.

Select your child's school from the search results.

Questionnaire

There will be 12 questions to answer, for example, 'My child is happy at this school' with a choice of responses:

- Strongly agree
- Agree
- Disagree
- Strongly disagree
- Don't know

Use the 'Next' button to move to the next question. If you change your mind you can use the 'Previous' button to go back.

Once you have completed all 12 questions, click on 'Finish the survey' and the questionnaire is complete.

Alerts

Registered users can sign up to receive an email when the results for a specific provider become publicly available and when there is a change in the number of responses after this. You can choose the frequency of the alerts at set up and by going to your profile.

How to complain

This survey is not designed to receive complaints about schools. If you wish to make a complaint or have a serious concern about your child's school, you can find more information on our [complaints page](#).

Parent View
Your child's school



[Home](#) [Give your views](#) [Parent View results](#) [Link to us](#)

[Contact Us](#)

[Return to the main Ofsted website](#)

[Home](#) > [Give your views](#)

[Preventing misuse](#)

[Terms of Use](#)

[How to use Parent View](#)



Give your views

Register/log in

If you have already registered with Parent View, please log in to complete the questionnaire.

Email addresses are used to help prevent site misuse. Only Ofsted will have access to this information.

This survey is not designed to receive complaints about schools. If you wish to make a complaint or have a serious concern about your child's school, you can find more information about how to do so on our [complaints page](#).

Not registered yet?

If you haven't registered with Parent View yet, just fill out the simple form on the link below. You will then be able to log in and give your views.

[Register now](#)

[I have forgotten my password](#)

Please log in

If you have already registered, please enter your email address and password to log in.

Email address

Password

[Log in](#)

Spring Term 2017

Date	Event
03/01/2017	INSET - Tuesday 3rd January 2017
04/01/2017	School Starts 9.00am Wednesday 4th January 2017
13/02/2017	Half Term Monday 13th February to Friday 17th February 2017
20/02/2017	School Starts 9.00am Monday 20th February 2017
31/03/2017	School Closes Friday 31st March 2017 2pm

Summer Term 2017

Date	Event
03/04/2017	Easter Holidays Monday 3rd April to Monday 17th April 2017
18/04/2017	School Starts 9.00am Tuesday 18th April 2017
01/05/2017	May Day Bank Holiday
29/05/2017	Half Term Monday 29th May to Friday 2nd June 2017
05/06/2017	School Starts 9.00am Monday 5th June 2017
19/07/2017	School Closes Wednesday 19th July 2017 2pm

Autumn Term 2017

Date	Event
01/09/2017	INSET - Friday 1st September, Monday 4th & Tuesday 5th September 2017
06/09/2017	School Starts 9am Wednesday 6th September 2017
19/10/2017	School finishes for Half term Thursday 19th October 2017
20/10/2017	INSET DAY - Friday 20th October 2017
23/10/2017	Half Term Monday 23rd - Friday 27th October 2017
30/10/2017	School Starts 9am Monday 30th October 2017
20/12/2017	End of Term Finish 2pm Wednesday 20th December 2017
21/12/2017	Christmas Holidays Thursday 21st December - Tuesday 2nd January 2018