



St Saviour's C of E Primary School  
33 Verulam Avenue, Walthamstow E17 8ER  
Tel: 020 8520 0612  
Email: [school@st-saviours.waltham.sch.uk](mailto:school@st-saviours.waltham.sch.uk)

## Weekly Newsletter

Monday 12th June  
2017

Website:  
[stsaviourscofe.org](http://stsaviourscofe.org)

Last week was one of those weeks with lots of activities going on!

On Tuesday, we had a special guest speaker, Ella Rothero, who spoke to the children about the Walthamstow Wetlands Centre during assembly. The children listened attentively when she talked about the wildlife to be seen on the marshes; she was very impressed with their responses to her questions. She invited them to design something to represent the wetlands as part of a competition.

If you wish your child to take part in this competition, they will need to collect a template for their artwork from Mr Murray - the deadline for completed artwork is 16th June. Check your emails for details. If you haven't done so already, I would highly recommend a visit to the Wetlands Centre (and the marshes in general) with the family on a sunny weekend.

Wednesday's assembly was also very special as the children were treated to one-man version of Shakespeare's Midsummer Night's Dream, which involved a lot of changes of costumes, hats and wigs. It was very interactive and some of the children participated in the performance - with lots of roars of laughter from the kids.

And if that wasn't enough fun for a week, the children and parents watched performances from the talented singers and musicians of St Saviour's on Wednesday afternoon. Year 3 were fantastic, playing the recorders, and we had our very own string quartet made up of children from years 4 and 5. The choir were also on good form and did their version 'Symphony' by Zara Larsson and Clean Bandit (I had to Google that information being the old fogey that I am). A lovely end to the day!

Thank you to Mrs Arce who took our Thursday assembly and talked to the children about Pentecost and the importance of the Holy Spirit.

Please note that, due to recent events, we have reluctantly decided that we will not be going on further educational visits into central London this half term. Following some smaller incidents in the area last week, schools have received a very reassuring email from Waltham Forest police making it clear that if they receive any intelligence which gives the slightest hint of any threat to schools, we will be informed immediately - but reassuring that we should carry on locally as normal. We will therefore be continuing with any local trips but have decided that the most prudent thing to do at the moment is to steer clear of the centre.

Don't forget that this week year 1 will be carrying out their phonics check, so please try to ensure that your child is in school every day. Years 3, 4 and 5 will also be carrying out assessments, so good attendance is also very important.

David Ogle, Head of School

### Our Value of the week is truth:

"Truth shall spring out of the earth; and righteousness shall look down from heaven."

Psalm 85:10

### Dates coming up

#### Parent Workshops:

Tuesdays at 4pm in  
The Cube, *unless otherwise stated*

#### **20th June 2017**

Have a Go at Home DT,  
Gavin Murray

#### **27th June 2017**

Geography,  
Emma Cherry

#### Parents Evenings

Wednesday 12th  
(3:50-7pm) and  
Thursday 13th July  
(3:50-6pm)

#### Sports Days

#### (weather dependent)

**Rec/Pre-School** Wed  
5th July, 9-11am  
**Y3-6** Thursday 6th July  
**Y1&2** Wed 12th July.  
**Parents Welcome!**

#### E17 Art Trail

Workshops 10th &  
17th June at St  
Saviours church

#### Summer Fare

**Saturday 8th July**  
**1pm to 4pm**

#### Year 6 Leavers Performance

Tuesday 11th July,  
5pm, in the hall

### Regular Events

#### Shining Stars Assembly

Mondays 9:10am.

#### Clergy Assembly

Thursday 9:10am  
*Parents welcome*

#### Head of School drop in

Tuesdays, 8:30-  
9:30am and 3-4pm.

#### Monthly Mass

**Please join us monthly at St Saviour's Church**  
Services run for about an hour from 2pm on a Thursday (unless indicated)

**29th June 2017**  
Y2

**13th July 2017**  
Y6 Leavers

### St Saviour's Church Family Services

**Please come to St Saviour's Church on the first Sunday of each month from 10am to 11am:**  
2nd July

Have a lovely week, best wishes

Executive Head Teacher

Deputy Head Teacher

## Shining Stars

Rec Oak - Bakary Touray  
Rec Birch - Keziah Christie  
Y1 Willow - Noah Ene-Richardson  
Y1 Elm - Inshal Inshal  
Y2 Oak – Taye Brown  
Y2 Birch – Maisha Jannat  
Y3 Elm - Vanessa Banas

Y3 Willow - Whole class  
Y4 Oak - Reiss Elliott-Parris  
Y4 Birch - Rafael Hotea  
Y5 Willow - Drunil Maisuria  
Y5 Elm - Abigail George  
Y6 Birch– Omari Smith  
Y6 Oak - Ephraim Boakye  
Tyrell Farrington

### Attendance

The whole school target for attendance is **96.5%**. From the start of the school year until now, our attendance since September is **95.33%**. Please help us to ensure that children are getting the best possible education by making sure that children are in school.

Well done to **Year 5 Willow** whose attendance was **98.18%** week ending 9th June 2017.

The class which had the most punctual week ending 9th June 2017 was **Year 6 Oak**. Well done to them! They win our Early Bird Bears for the week.

We continue to have an issue with lateness and attendance. This week we had **83 incidents of lateness** and **our overall attendance is below the national average of 95.6%**. These figures are a clearly detrimental to our pupils' education. Letters have gone out to parents/carers whose children's attendance is below 90%. We are over halfway through the year and 90% is equivalent to missing half a day's education every week. Please help us to improve this.

### Class corner – Year 6 Oak

After our residential trip to Hayling Island, Year 6 have been rehearsing for our production which will take place on Tuesday 11th July at 5pm in the hall. We are very excited to see you all there.

In Maths we have been looking into investigation and getting ready for secondary school. Our literary focus is King Kong and we are learning more about 1930 New York. Our topic has been related to the recent election where we have learnt about votes for women and the importance of each of our votes.

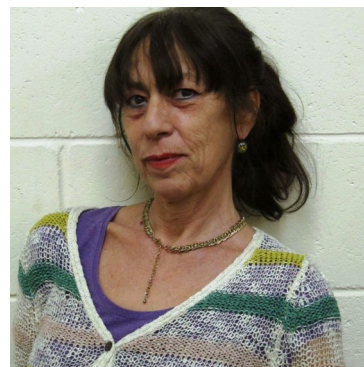
*Miss Ford, Year 6 Oak class teacher*

### Harriet Hammel RIP

It's a sad news to everyone that our talented sister and very active in the church Harriet Hammel has passed away after a short illness. She is now in the hand of our Saviour Jesus Christ, so please pray for her, she may rest in peace and rise in glory.

Harriet was a great and much appreciated supporter of our school and played piano in our school Masses over many years. Her funeral takes place this Wednesday, at 10am at the Church. Parents and carers are very welcome to attend. Family flowers only please though donations to the family would be very much appreciated.

Please do not park in the church car park on Wednesday morning when dropping off children as space will be needed for the mourners.



## Evan Page - Reception Birch

On Sunday 28h May 2017 Evan done the Vitality Westminster Mile. The event was held at the Mall, Buckingham Palace and Green Park. Evan done the even with his mum and dad in a time of 13 minutes and 18 seconds.

From all of us at St Saviour's we would like to say WELL DONE EVAN! We are so very proud.



### Class Photos

On a lovely day such as today, we're reminded how lucky we - and the children - are to have such a wonderful field in our grounds. Very few schools in London have such a facility for PE and simply playing on grass at lunchtimes. This pleasant sight was our children being organised for class photos today. Please look out for order forms and sample photos in a week or so, which will be sent out via your child.





## Spring Term 2017

Date	Event
03/01/2017	INSET - Tuesday 3rd January 2017
04/01/2017	School Starts 9.00am Wednesday 4th January 2017
13/02/2017	Half Term Monday 13th February to Friday 17th February 2017
20/02/2017	School Starts 9.00am Monday 20th February 2017
31/03/2017	School Closes Friday 31st March 2017 2pm

## Summer Term 2017

Date	Event
03/04/2017	Easter Holidays Monday 3rd April to Monday 17th April 2017
18/04/2017	School Starts 9.00am Tuesday 18th April 2017
01/05/2017	May Day Bank Holiday
29/05/2017	Half Term Monday 29th May to Friday 2nd June 2017
05/06/2017	School Starts 9.00am Monday 5th June 2017
19/07/2017	School Closes Wednesday 19th July 2017 2pm

## Autumn Term 2017

Date	Event
01/09/2017	INSET - Friday 1st September, Monday 4th & Tuesday 5th September 2017
06/09/2017	School Starts 9am Wednesday 6th September 2017
19/10/2017	School finishes for Half term Thursday 19th October 2017
20/10/2017	INSET DAY - Friday 20th October 2017
23/10/2017	Half Term Monday 23rd - Friday 27th October 2017
30/10/2017	School Starts 9am Monday 30th October 2017
20/12/2017	End of Term Finish 2pm Wednesday 20th December 2017
21/12/2017	Christmas Holidays Thursday 21st December - Tuesday 2nd January 2018

## Term dates 2017-18

### Autumn Term 2017

#### **First Half (33 Days)**

*INSET – Friday 1<sup>st</sup> September, Monday 4<sup>th</sup> September 2017, Tuesday 5<sup>th</sup> September 2017*

Start – Wednesday 6<sup>th</sup> September 2017

End – Thursday 19<sup>th</sup> October 2017

*INSET – Friday 20<sup>th</sup> October 2017*

**Half Term:** Monday 23<sup>rd</sup> October 2017 - Friday 27<sup>th</sup> October 2017

#### **Second Half (38 Days)**

Start – Monday 30<sup>th</sup> October 2017

End – Wednesday 20<sup>th</sup> December 2017

**Holidays:** Thursday 21<sup>st</sup> December 2017 to Tuesday 2<sup>nd</sup> January 2018

### Spring Term 2018

#### **First Half (26 Days)**

*INSET – Wednesday 3<sup>rd</sup> January 2018*

Start – Thursday 4<sup>th</sup> January 2018

End - Friday 9<sup>th</sup> February 2018

**Half Term:** Monday 12<sup>th</sup> February 2017 - Friday 16<sup>th</sup> February 2018

#### **Second Half (29 Days)**

Start - Monday 19<sup>th</sup> February 2018

End – Thursday 29<sup>th</sup> March 2018

**Holidays:** Friday 30<sup>th</sup> March to Thursday 12<sup>th</sup> April 2018

### Summer Term 2018

#### **First Half (30 Days)**

Start - Monday 16<sup>th</sup> April 2018

End - Friday 25<sup>th</sup> May 2018

**Half Term:** Monday 28<sup>th</sup> May 2018 - Friday 1<sup>st</sup> June 2018

**Holidays** May Day Bank Holiday: Monday 7<sup>th</sup> May 2018

Spring Bank Holiday: Monday 28<sup>th</sup> May 2018 (during Half Term)

#### **Second Half (35 Days)**

Start - Monday 4<sup>th</sup> June 2018

End –Friday 20<sup>th</sup> July 2018

This calendar gives a total of 195 days (190 pupil days plus 5 inset days).